

Welcome to Pembroke Academy

While we are unable to show you around our site, we hope these photographs and the virtual tour video will help you to learn more about your new school.

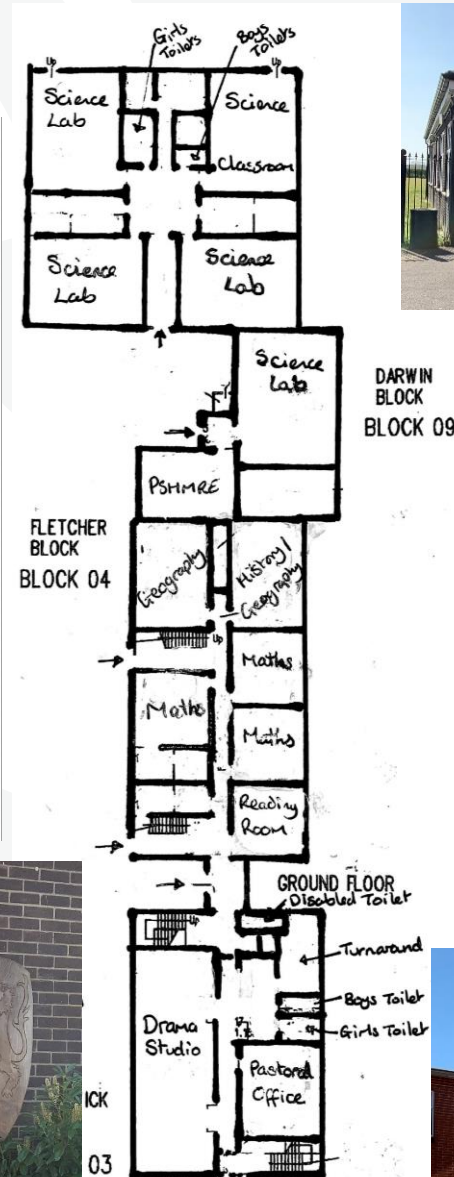
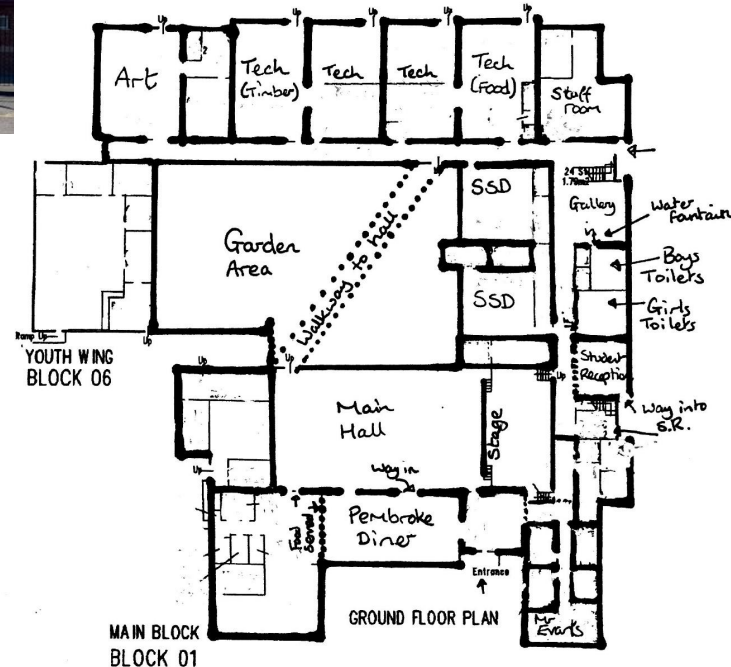
Pembroke Academy is made of 5 main teaching areas:



Sports Hall



Main Block



Whittle



Fletcher and Darwin



Borthwick



PEMBROKE
A PRIORY ACADEMY

The Start of the Day



If you arrive by bus or car, you will be dropped off in front of the sports hall



Follow the footpath down the side of the sports hall towards the football and tennis courts.



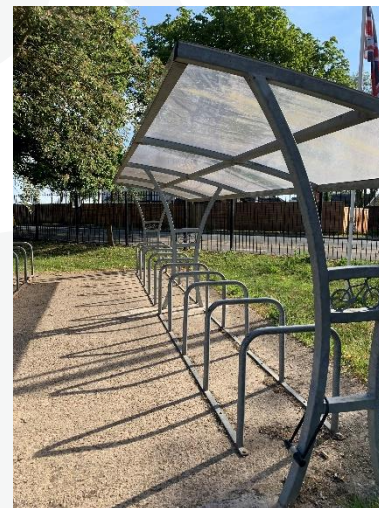
This will bring you into the Quad, where you can access each of the teaching buildings.



Before 8.35, wait in the Quad until it is time to go into form period.



If you walk or bicycle to school, enter through the main gates in front of reception (where Mr Evans and the Senior team stand every day). Please do not walk through the car park,



If you bicycle to school, please lock it securely in the bike shed near the main gate.



Walk through the large gates into the Quad and before 8.35, wait until it is time to go into form period.

Main Block – Ground Floor

The Garden is used at break and lunch as an outdoor eating area



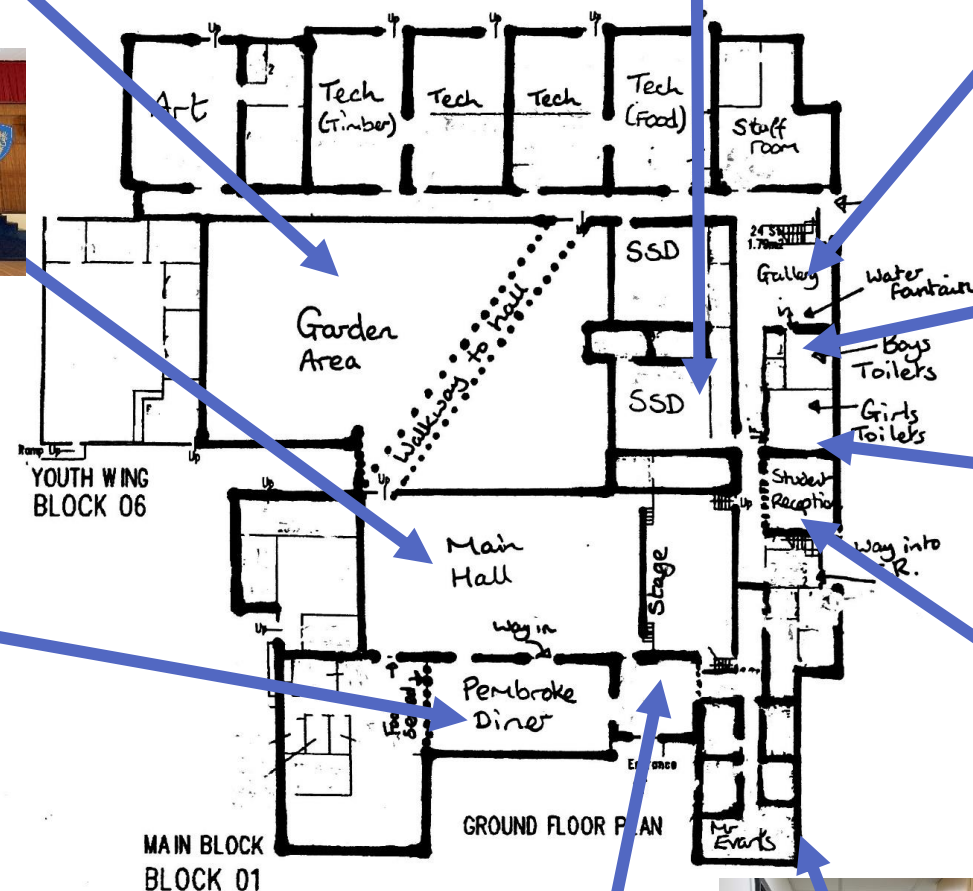
The Main Hall is used for assemblies, some PE lessons, as a lunchtime area and for shows.



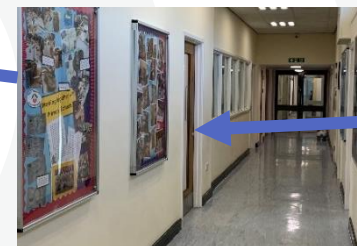
You may use the Student Support Department to get additional help with your learning. It is also a quiet space for some students to use at break and lunchtime.



Student Art Gallery



Boy's toilets



Girl's toilets

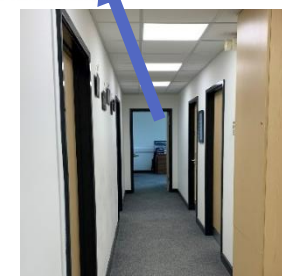


The Pembroke Diner serves food and drinks at break and lunch time. You can eat in the Diner, main hall or garden area



PEMBROKE
A PRIORY ACADEMY

Visitors to school arrive in main reception, where they are greeted by Mrs Cooper.



Mr Evans' office



Student Reception is open to students all day to help you with lots of things.

Visiting the Pembroke Diner



Go into main block through this door and walk through the double doors into the Technology corridor.



Walk through the Garden using the covered paths and enter the Main Hall.



Leave your bag and coat in the main hall and go through the open blue doors (don't forget your money!)



In the Diner, queue next to the windows or wall to buy food or drinks.



You can eat your Diner food or packed lunch in the Diner, Main Hall or Garden area.

Visiting Student Reception



If you need to visit Student Reception, go to the grey outside door in the Quad



Inside Student Reception, walk to the counter and politely ask Miss Andrews, Mrs Lindsey or Mrs Karran your question.

What can Student Reception help with?

Directions if you are lost

A new timetable if you have lost yours

First Aid help if you are injured

Phoning home if you have forgotten your equipment, homework or lunch.

And many more things!



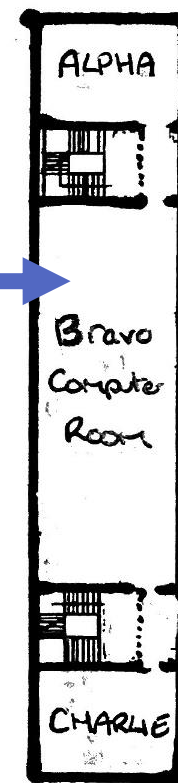
PEMBROKE
A PRIORY ACADEMY

Main Block has 3 floors

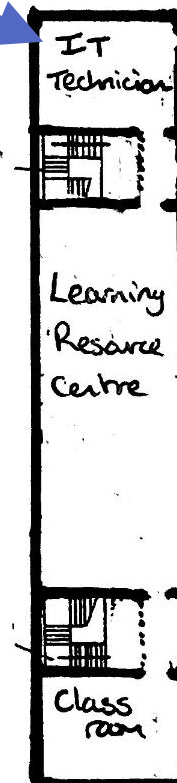


Bravo computer room is open to students during lunch break. Students can sensibly and quietly complete homework, print, or play games at this time. You must not eat or drink in the computer room

If you need help with your password or other IT problems, the IT technician can be found on the top floor.



FIRST FLOOR PLAN
MAIN BLOCK
BLOCK 01



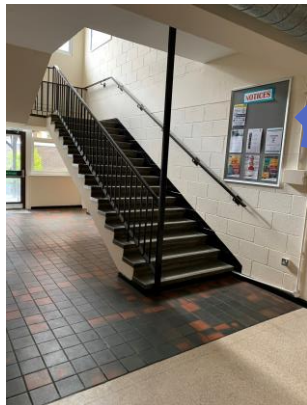
SECOND FLOOR PLAN
MAIN BLOCK
BLOCK 01



Fletcher Block

Most of your lessons will be in Fletcher Block.

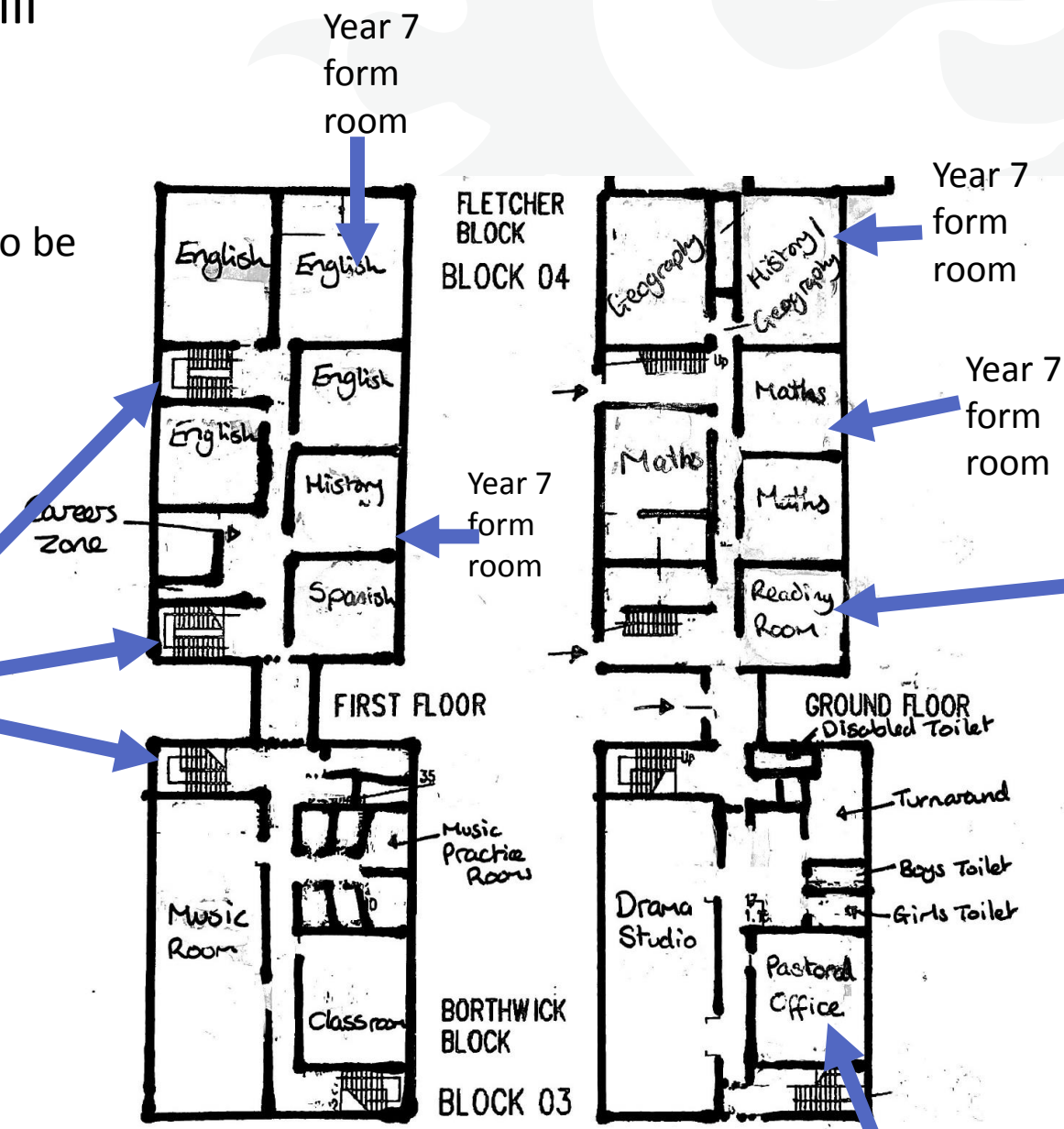
Your form room (where you register every morning) will also be in this block.



Always make sure you are walking sensibly and following the one-way system on the stairs



PEMBROKE
A PRIORY ACADEMY



You will have a reading lesson every week in this amazing room. Students can also use the room at lunchtime and after school for clubs, quiet reading and to borrow books.



If you need to talk to someone, because you are worried, upset or need a little help, the Pastoral Managers are here to listen to you.